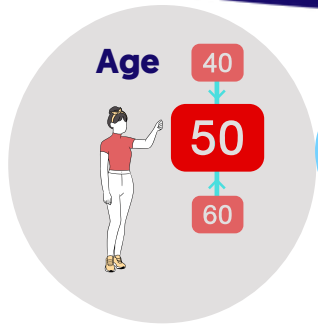


# The Role of X-ray in Frozen Shoulder



**Diagnostic Criteria:**

- ✓ Global loss of passive ROM
- ✓ **Normal x-ray.**

..so should I x-ray every suspected frozen shoulder?

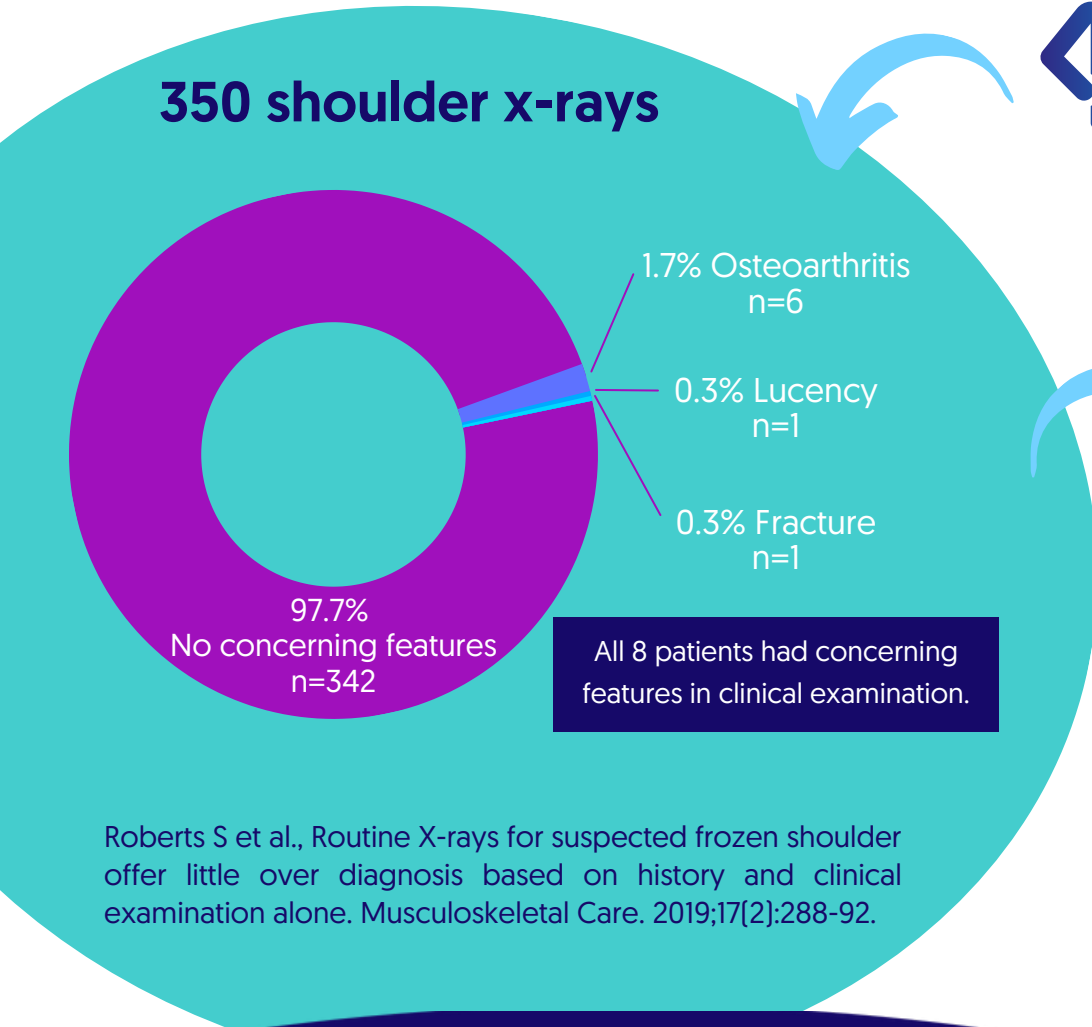
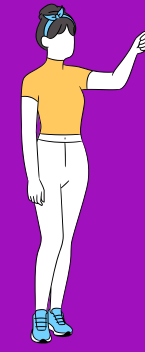


..but I don't want to miss one of these

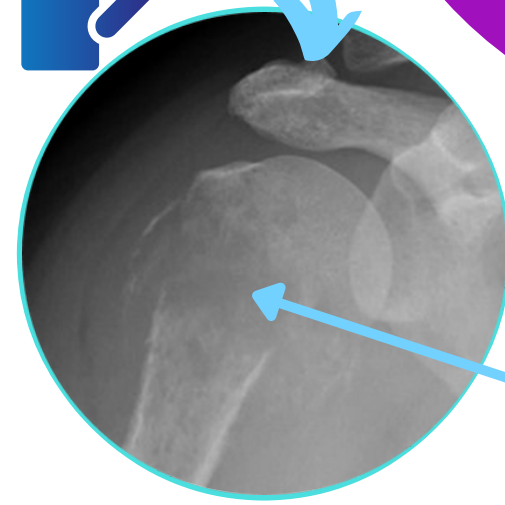


## X-Ray Indications

- ✓ Age  
Very young (<40y) or very old (>60y)
- ✓ Trauma  
Fracture or posterior dislocation
- ✓ Previous injury or surgery  
AVN
- ✓ History of cancer  
Esp. breast, lung, kidney, prostate, thyroid  
Radiation therapy
- ✓ Corticosteroid use  
AVN, osteoporotic fracture
- ✓ Lifestyle risk factors  
Excessive alcohol use (AVN)
- ✓ Differential diagnosis  
If it will change treatment or prognosis
- ✓ Prior to invasive procedure  
E.g. Corticosteroid injection
- ✓ Not improving



Roberts S et al., Routine X-rays for suspected frozen shoulder offer little over diagnosis based on history and clinical examination alone. Musculoskeletal Care. 2019;17(2):288-92.



Proximal humerus metastasis